



Peggy Root Dandelions, 40" x 60", oil on linen, 2015

Spring is here! and it's (past) time to plan for upcoming classes and workshops, so here's our little newsletter with that and other info.

Spring Cleaning: *We feel the need to do a little updating of our websites and mailing lists, etc. If you would like to join our mailing list, or be dropped from it, please let us know. Root Studio School is now 13 years old and is thriving. Thank you for your interest and support!*

Upcoming show: *Peggy's work will be featured in in new group exhibition of evening works at the Blue Spiral 1 in Asheville. "Dusk Till Dawn" opens May 3 (5-7) and runs through June 26th.*



Upcoming workshops and Classes: Join us!

Life Light and Atmosphere

May 20 – 24 Five-Day Intensive Painting Workshop at Root Studio School

We are bringing back a popular workshop from the past. It will focus on the importance of light in your paintings—the flow of light, the design of light. Peggy & Tom will lead the workshop together. See page 6 for more information.

JUNE PAINTING CAMP

June 3 – 5 Peggy will teach a three-day outdoor landscape workshop early June in beautiful areas near the lakes and farmland near Wilbur and Watauga Dams. See page 7 for more information.

Summer Term begins June 13th at Root Studio School

We will offer an 8-week summer term this year starting the second week in June. Tom will be teaching Thursday Morning Figure Class, his popular Friday Morning Portrait Class and Saturday Morning Still-Life Class. See pages 3-5 .



We have a beautiful new sign!

Thank you to Mellow Tiger Signs and Designs and artist/designer Erin Fenley for her masterful handpainting skills - Soon to be installed out front!

THE FIGURE:

Drawing &
Painting,
Anatomy &
History



Tom Root, Instructor

Thursday Mornings 9 – 12

Class starts June 13th

8-week session \$400. (Includes Model Fee)

In this eight-week class, participants will work from the nude and clothed live model. We will explore figure drawing, both short and long poses, and, later in the term, advance to extended poses for painting or rendered drawing. Each class will begin with a discussion of some aspect of human anatomy and there will be several slideshows during the term featuring figure paintings ancient and modern.

Suggested Drawing Materials: *Newsprint, brown craft paper or gray toned charcoal paper; vine charcoal, pastel white or chalk, etc., backing board.*

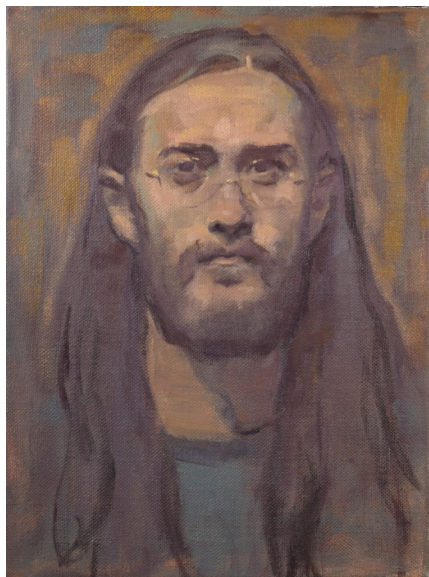
Suggested Painting Materials: *Canvases: Several medium to medium-large canvases of different height/width ratios, so as to best respond whatever the pose, which are (optional) toned in advance and dry with a middle value blue-gray or other neutral.*

Palette and Tools: a clean wood, hardboard or thick glass palette (paper palettes are not optimal); a palette/medium cup; a palette knife for mixing paint; cotton rags or paper towels, brush cleaner.

Brushes: various sizes of natural bristle oil brushes (filberts, flats), such as Robert Simmons Signet series. (I use #2, 4, 6, 8, 12 filberts and the occasional flat.) Brushes should be flexible and not stiff w/ old paint.

Medium and Thinner: odorless mineral spirits such as Gamblin Gamsol; oil painting medium such as stand oil (or W&N Painting Medium, Gamblin Galkyd or Graham's Walnut/Alkyd).

Oil Colors: titanium white; yellow ochre; raw umber; cadmium red light; oxide red (a.k.a. light red, English red, Venetian red or Indian red); quinacridone red (aka permanent rose); ultramarine blue; W&N Prussian green (or viridian).



Friday Portrait Class

FRIDAY MORNINGS 9 – 12

Starts June 14, 2024

8-week session \$380 (includes model fee)

Tom Root, Instructor

Students will paint and draw the portrait from the live model. The instructor will demonstrate and discuss aspects of the portrait, including achieving a likeness, posing, lighting, design-- all in the context of understanding the portrait's history and future potential as fine art. Basic drawing and painting skills will also be taught. In addition to making short demonstrations to illustrate various points, the instructor will paint alongside students as an ongoing demonstration of how to develop and complete paintings.

Suggested Materials:

Canvases: medium sized canvas panels or stretched primed canvas (16"x20," 18"x24" or so). Palette: wood, Masonite or thick glass; palette cup; palette knife; cotton rags or paper towels.

Brushes: various sizes of natural bristle oil brushes (filberts, flats).

Medium: odorless mineral spirits; oil painting medium (commercially prepared or stand oil or refined linseed oil or walnut oil, etc.).

Oil colors: titanium white; yellow ochre; raw umber; cadmium red light; English red light (a.k.a. light red); alizarin crimson or permanent rose; burnt sienna; ultramarine blue: viridian or Prussian green.



STILL-LIFE & STUDIO PAINTING

SATURDAYS 9-12 Starts June 15, 2024 8-week session \$300

Level - Beginner to Advanced. Classes are designed for adults, but serious teen students are welcome. Schedule is subject to change due to instructor schedules. **Tom Root, Instructor.**

Students will draw and paint from still-life set ups, starting with initial lessons in learning to "see" and represent forms in space and progressing on to making artful paintings. The instructor will demonstrate and discuss the techniques, materials and history of oil painting. This is an ongoing class where new students mix with more experienced painters. Students may also choose to work on their own projects and receive individual critiques.

Suggested Materials:

(If you are purchasing art supplies for the first time, your instructor will be happy to make recommendations.)

Drawing students: vine charcoal; sandpaper block; kneaded rubber eraser; chamois; backing board; charcoal paper.

Painting students: Canvases: medium sized canvas panels or stretched primed canvas (16"x20," 18"x24" or so). Palette: wood, hardboard or thick glass; palette cup; palette knife; cotton rags or paper towels.

Brushes: various sizes of natural bristle oil brushes (filberts, flats) such as Robert Simmons Signet brand.

Medium: odorless mineral spirits; oil painting medium such as linseed, stand or walnut oil. Some suggested oil colors: titanium white; yellow ochre; cadmium lemon, raw umber; cadmium red light; quinacridone rose; burnt sienna; ultramarine blue; Prussian green or viridian.

For more information call Tom at (423) 302-8960 or write: rootstudioschool@gmail.com

Studio and portrait classes are taught by Tom Root. Class schedules are subject to possible adjustments due to commission and exhibition deadlines (with full notice given, and make-up classes provided) Call Tom at (423) 302-8960 or write us at: rootstudioschool@gmail.com

Life Light and Atmosphere



May 20 – 24, 2024

Five-Day Intensive Painting Workshop for Artists

Location: Root Studio School, Jonesborough, Tennessee

Tom and Peggy Root combine their knowledge and years of experience to teach an immersion workshop for all levels of artists wanting to refresh their inspiration or shore up their foundational skills.

In this intensive, participants will study the flow and organization of light and the sensation of atmosphere and space in painting. Peggy will lead morning landscape painting outside on location from 9 till noon. Students will then return to the studio for lunch break, fellowship, art study and review of the morning's work. In the afternoons, from 2 – 5, Tom will lead students in a series of targeted exercises designed to heighten perception and improve their work in landscape, still-life and figure. Slide lectures will be used to enhance study. Lessons will be directed for oil painting, but participants may work in the medium of their choice. A pot luck meal will be held on Thursday evening at the studio.



Historic Jonesborough has wonderful options for meals and lodging for out-of-town participants, as well as quaint shops, walking trails, history, and southern hospitality along with every convenience. This five-day workshop is \$625. (model fee included). A \$300 deposit with registration will hold your spot in the workshop. For more information and a supply list, call (423) 302-8960 or write us at rootstudioschool@gmail.com.





Peggy Root, *Hemlocks, Trout Lake*, 2010, oil on canvas.

June 3 – 5, 2024

JUNE PAINTING CAMP

Three-day intensive landscape painting workshop with Peggy Root

Respected landscape painter Peggy Root shares her 40 plus years of professional experience painting "en plein air" in this intensive landscape workshop. The format is designed to be relaxed, yet rigorous, with plenty of time for painting, instruction and camaraderie with fellow artists. All levels are taught, from professional to beginner. For those driving, all locations are easily accessed by Interstate 26 and 81 and are in close proximity to the Tri-Cities (Johnson City/Kingsport/Bristol) and a short trip from Asheville and Knoxville. Accommodation lists and local tourist information is available for out-of-towners. Car-pooling and rides for those attending without cars can be arranged. A suggested supply list, set-up ideas and workshop details will be sent out to all participants.



For this June Painting Camp we will be painting some beautiful areas around Elizabethton, Tennessee. We will paint mornings and afternoons as we explore lakefront areas as well as nearby mountains and farmland around Wilbur and Watauga Dams. Price of the workshop is \$400. For more information and to register call (423) 302- 8960 or write us: rootstudioschool@gmail.com

